



VISTA D'ORO

BY SAHINOGLU

SAHINOGLU VISTA D'ORO

SAHINOGLU VISTA D'ORO



Designers

Selahattin Şahinoğlu OWNER-DESIGNER

He is the founder of the Şahinoğlu Company. With his hundreds of products, he leads the Şahinoğlu's 50-year-old product range. He has achieved to be the first in products which he designs, with following the world developments in sector.

Alessio Romano DESIGNER

Alessio Romano is shown among the the most successful designers of future numbers of time in the best designing magazines. He is still designing for the foremost Italian companies like Kundalini, Sign, Pimar, SpHaus, Swish, Naj Oleari.



Selahattin Şahinoğlu



Erdem Şeker



Bersun Ertürk



Francesco Diamante



Vito Tripolone



Nicola Golfari

Bersun Ertürk DESIGNER

Bersun Ertürk, the award winning designer, continues his creativity in Dubai for almost 7 years. Graduated at 2003 from Interior Architecture and Environmental Design Department of Bilkent University as the first. Interiors, products, furniture and event designs are part of his scope and worked on quite interesting also renown projects so far. Living in a multicultural environment, brings a blend of east's tradition and west's contemporary approach to his designs which he carries to further and spices up with creativity.



Erdem Şeker DESIGNER

After finishing his education at Bilkent University, Erdem Şeker, who is the founder of the RDM'S Architects, has been carrying on his architecture and designing studies since 2005 in Milano where he finished his education as a professional. Erdem Şeker, who is carrying out his designs both technically and conceptually, is going on his studies about Product-Service-System Design while performing large scaled projects.

Vito Tripolone DESIGNER

Vito Tripolone graduated from the Architecture Department of Syracuse University. In 2006 he was deemed to deserve the 1st Prize with his Project-X, a multifunctional microwave oven, in a competition called 'A/ Design, Aluminum Forms of Living' which held in Italy. He started his own designing studio in 2011 and is doing ECO sustainability projects with his innovation and researches about material.

Francesco Diamante DESIGNER

Francesco Diamante, Industrial Designer, class 1982. His designer career starts in 2005, when he graduated, at European Institute of Design (IED), the university degree in Industrial Design and he won an scholarship to design eyewear for Marcolin S.p.A. Later in years, he had different work experiences such as collaboration with architectural studio, design studio and luxury furniture's showroom. In 2008 he decided to start a brand new freelance career by creating the Studio Francesco Diamante and at the same time he covered the position of University professor at European Institute of Design.



Bella is the new black



BELLA BLACK

*Modern Design.
Simple but still
Luxurious.
Black finishing
of Bella.*



3512-6-090

3504Y-6-090

3518-6-090



3503-6-090



3507-6-090



3516-6-090



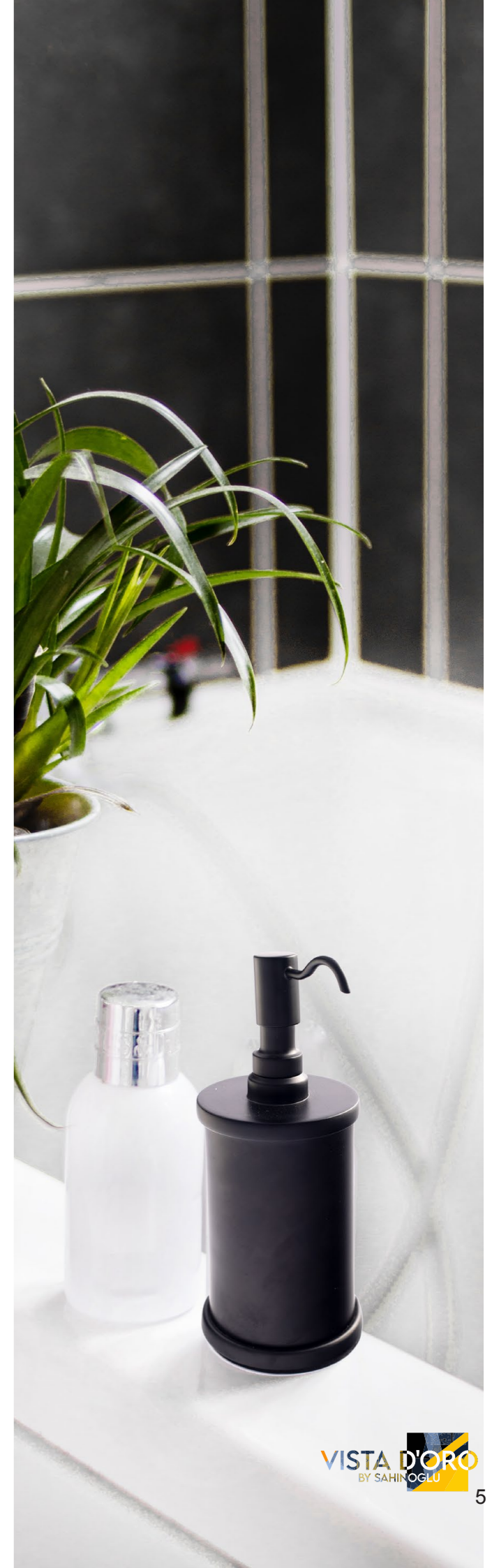
3549-5-090



3549-5-090-2



3541-3-090A





BELLA SATEN GOLD



3507-6-007



3516-6-007



3503-6-007



3541-3-007A



3549-5-007-2



3518-6-007



3505-6-007



3549-5-007



3504Y-6-007



3512-6-007

BELLA SATEN

Modern
but still shining

EXCLUSIVE
HANDCRAFTED
DESIGN

SEFA BRONZE



3549-02-008



3507-02-008

SEFA BRONZE



3504Y-02-008



3512-02-008



3503-201-003

POMEGRANATE GOLD / BRONZE



3507-201-003



3512-201-003



3549-201-008-2



3503-201-008



3507-201-008

Luminous bathroom accesories



3516-201-008



3512-201-008



3504Y-201-008

Specially handcrafted, elegant design



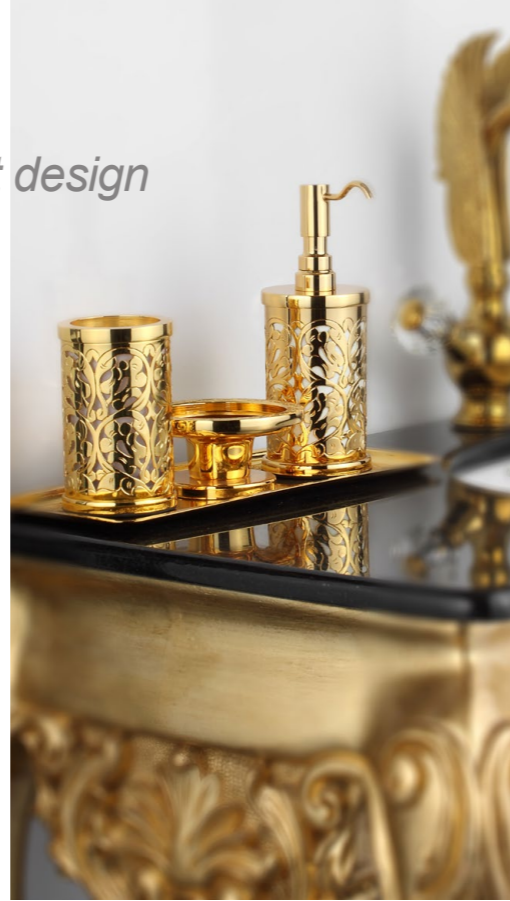
3507-120-003



3503-120-003



3516-120-003



RÖLYEF CHROME



3503-141-005



3507-141-005



3549-141-005

Geometric design on chrome



3541-141-005A



3516-141-005



3504Y-141-005

CONCHIGLIA GOLD



3541-120-003-1



3549-120-003



3512-120-003



3504Y-120-003

PLATIN



3541-3-016A



3516-6-016



3549-5-016



3541-8-005



3507-8-005



3503-8-005



3549-8-005



3504Y-8-005



3512-8-005



3519-8-005

BUTTERFLY CHROME

*Butterfly,
Mariposa,
Pedaliza....
Stylish in every
language...*



3503-180-321



3507-180-321



3541-3-003A

WAVE GOLD



3549-5-003



3512-180-321



3504Y-180-321

EXCLUSIVE
HONEY GLASS



WAVE

Justina Blakeney
THE NEW BOHEMIANS

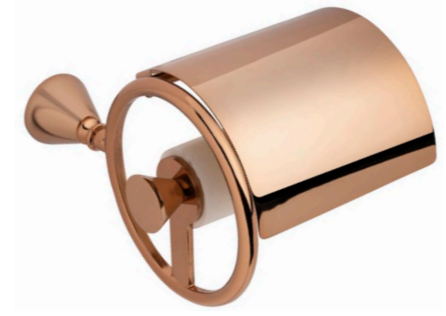
DESIGN



CHICH



3513-39-008



3514K-39-008



3518-39-008

ANELLO BRONZE / GOLD



3510-39-003



3506-39-003



3518-39-003



NEW MOON

Bathroom accessories

3510-606-008

3513-606-008

3506-606-008

LEATHER DOOR HANDLE SERIE

Charismatic combination of brass and leather



02234-003-D01



02234-005-D02



1004-013-25-100-D02

BRASS

HANDCRAFTING



10235-013

BLU DOOR HANDLE SERIE



02235-013Y

LINEA AND ARCH DOOR HANDLE SERIES



02108-OS013Y



25240-OS013-128

DARK BRASS OXIDE



222022-OS013Y



KANALLI DOOR HANDLE SERIE



22240-080



22240-007



Eye-catching modern designs

WAKRA DOOR
HANDLE SERIE



01242-013Y



02242-013



CROWN DOOR
HANDLE SERIE



01255-013Y



02255-013Y

BARK DOOR HANDLE SERIE



02145-012



02145-037



02145-980



ANTIK DOOR HANDLE SERIE



POPULAR SERIE



1012-003-25-35



0112-003



0212-003y



1512-031

DIVERSITY AND CUSTOMIZING
Different Rosette Types;
Wc type-cycline hole type- key hole room type



WC type 1812-003w



1812-003Y



1812-003



02122-013Y

LOUVRE DOOR HANDLE SERIE



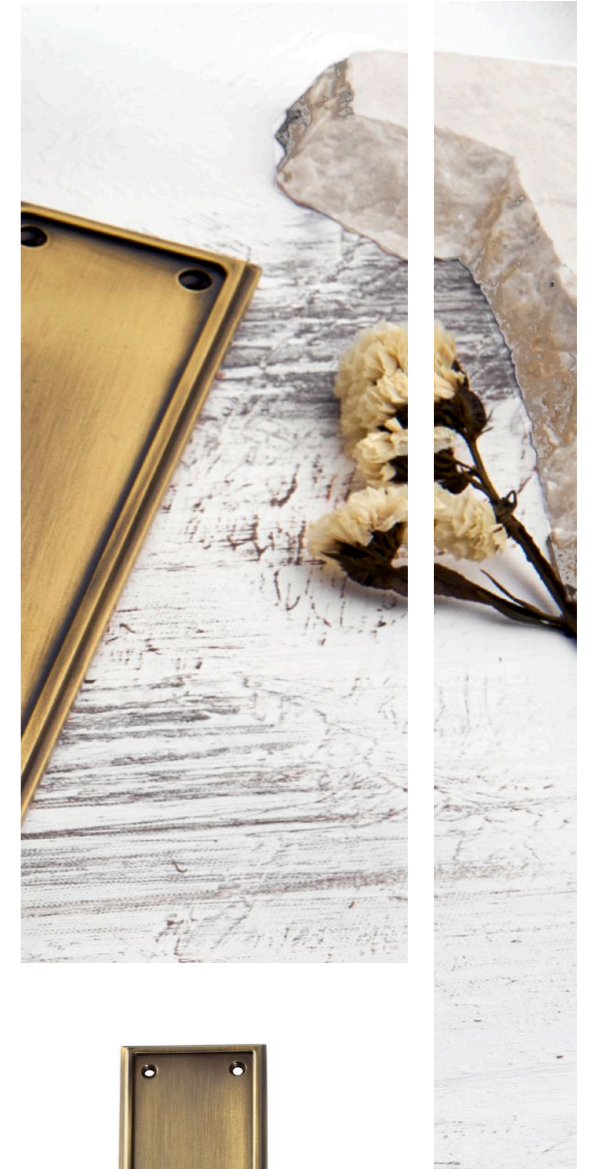
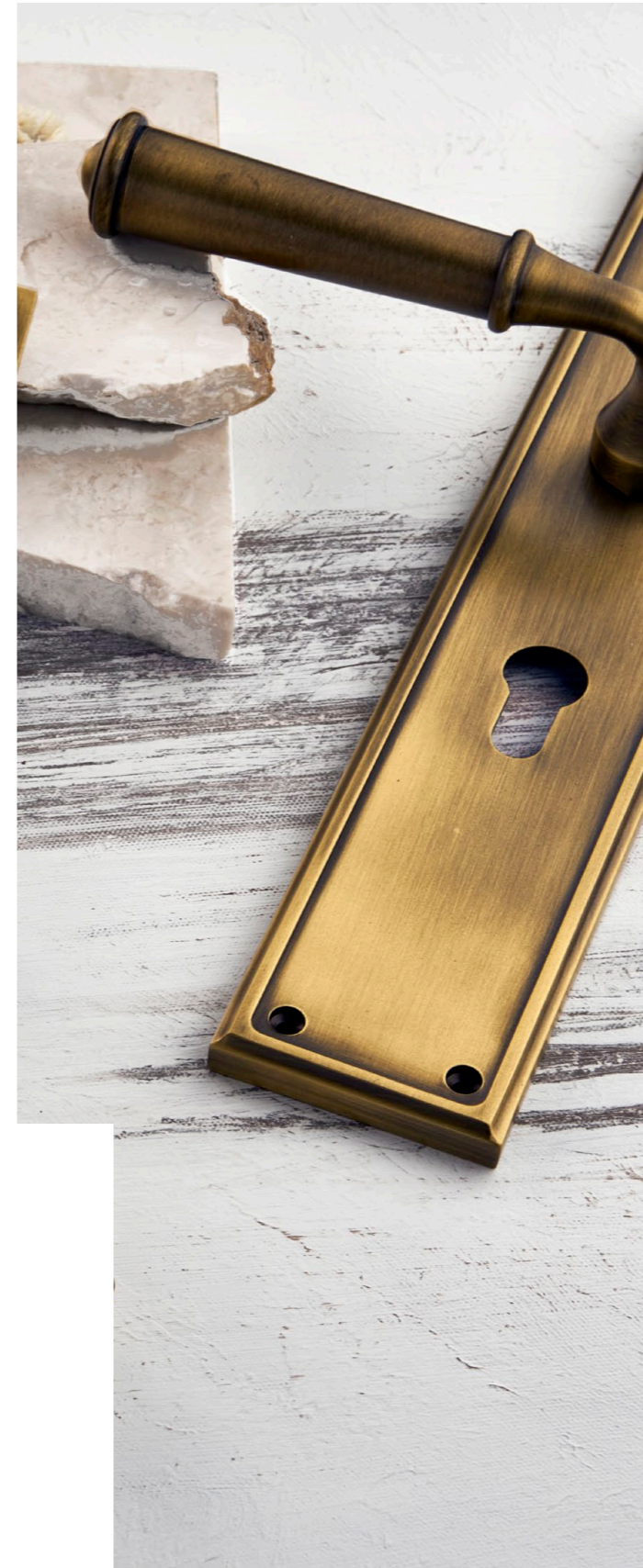
1625-013-2101-U



02122X-013



Contemporary yet timeless..



01122X-013



10146-003-40-80



10107-030-28-500



10147-003-365-572

PULL HANDLES



10141-030-40-80



10140-005-40-80



1012-003-40-120



10109-148-013-120



10109-007-100



10222-003-4-80



10240-013-60



10135-011

Exclusive collection of architectural handles...



10142-003-25-35



1012-003-20-30



10125-007-25-30

RIGA HALFMOON HANDLES



07620-013-R15X4-96



07620-007-R15-96



07620-003-R15-96



RIGA

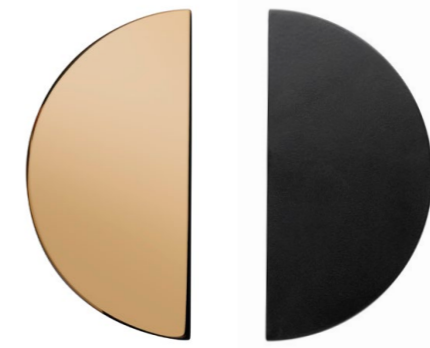
Basic yet sophisticated

DAMLA COLINA HALF MOON



Add a classic or modern touch to your home with semicircle halfmoon handles.. Suitable for any home...

HALF MOON HANDLES



07604-003-R10

07604-090-R10



07640-007-R15-96



07604-007



07606-013



07606-007



07606-013-R12.5



07606-008-R12.5



07606-007-R12.5

NEW MOON HALFMOON HANDLES



*Refreshing as spring,
Unique as design...*



2557-003-192



2557-056-96

DRAWER HANDLES



25125-003-256



2552-005-224



2552-013-224



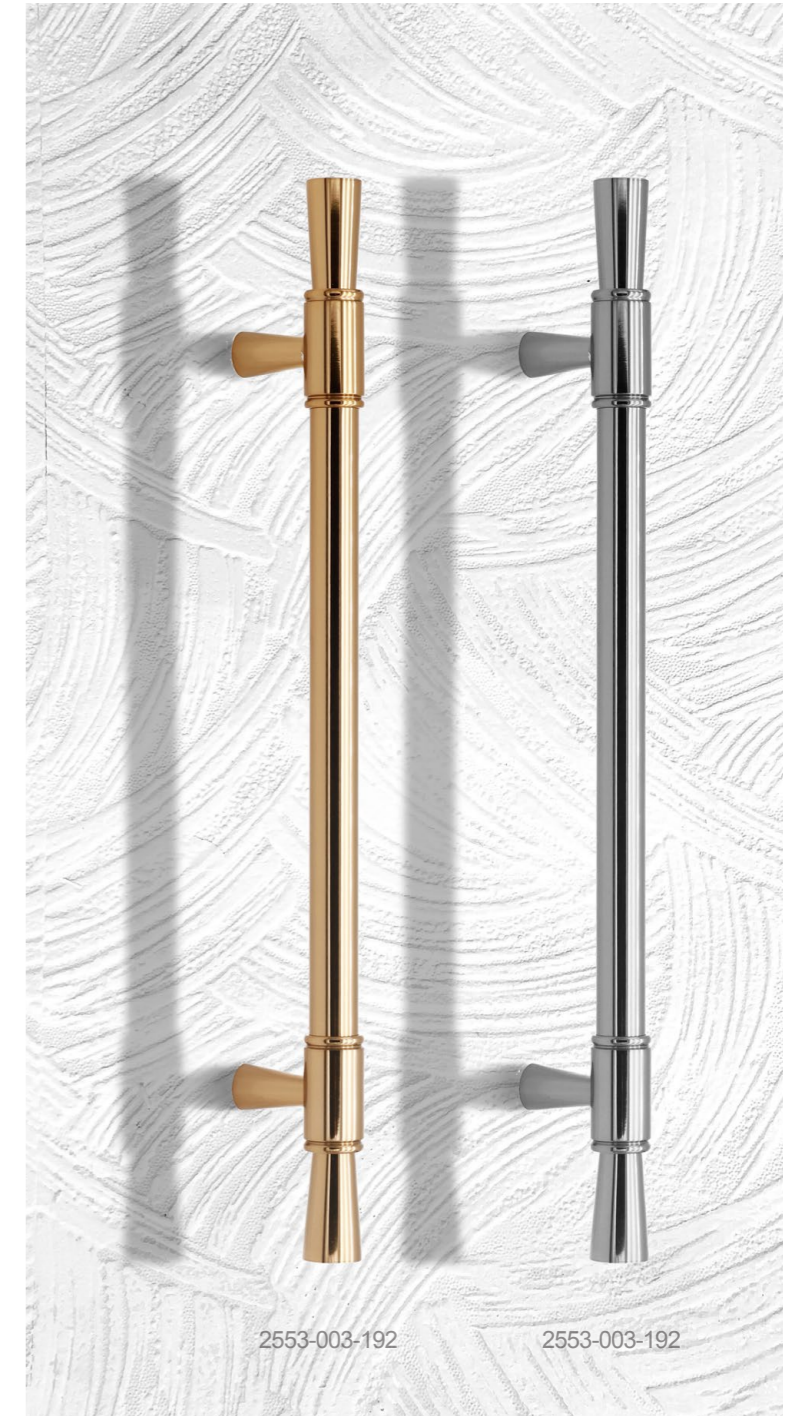
2552-007-192

MIAMI DRAWER HANDLE

Various modern drawer handle designs; minimum 5 year guarantee of solid brass...



0753-005



2553-003-192

2553-003-192

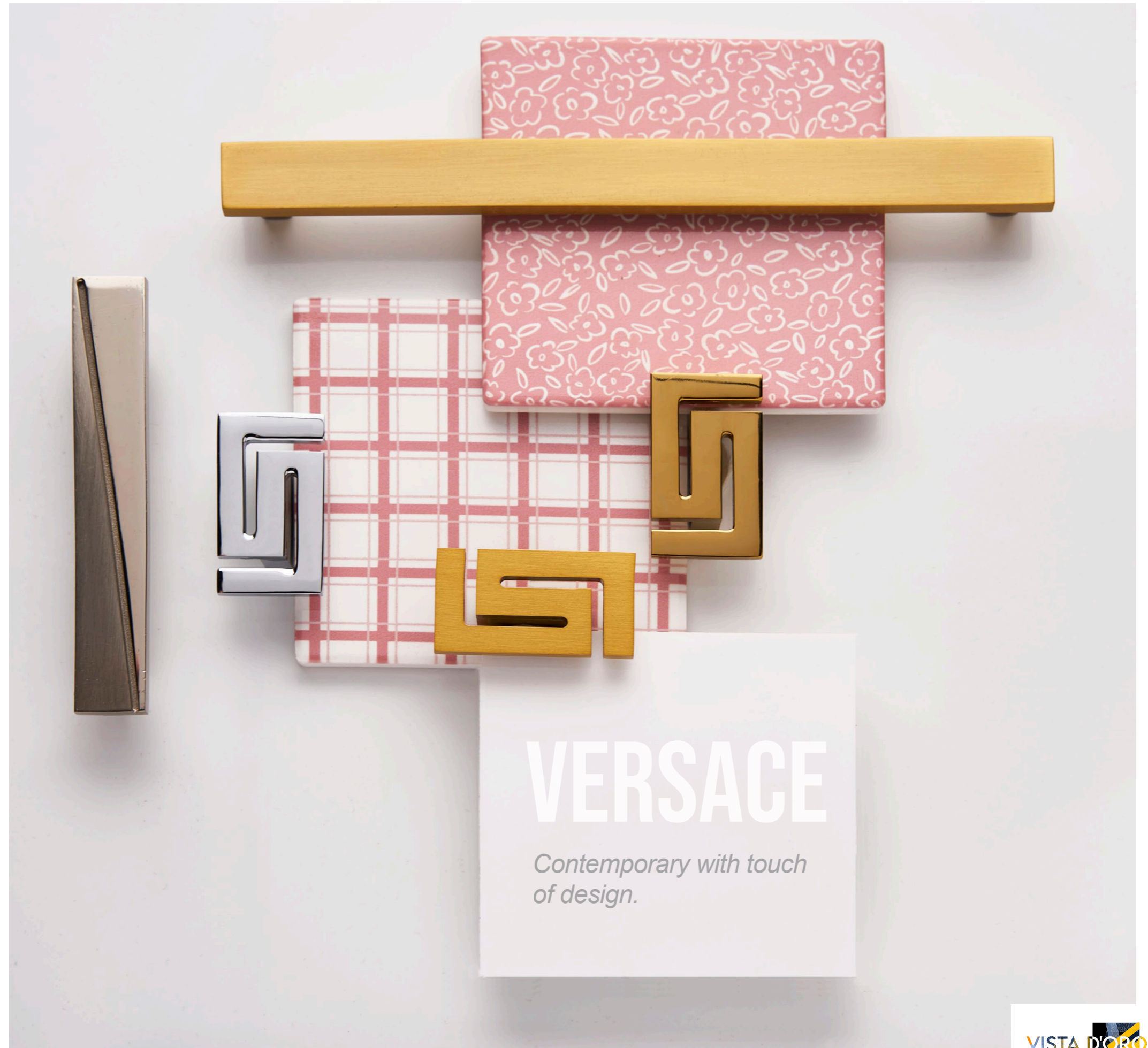
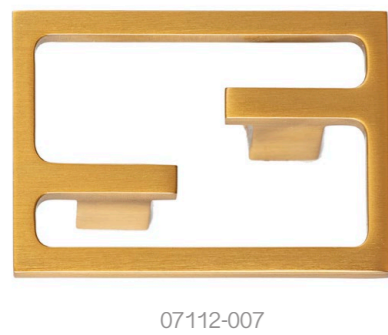
VERSACE



MIRAGE



VOGUE



VERSACE

Contemporary with touch of design.

POPULAR SERIE



2512-030-160



2512-015-160



2512-005-160



2512-003-160

ANTIK DRAWER HANDLE



2512-090-160



2512-016-160



25123-008-16-192

ANASTASIA DRAWER HANDLE



25149-16-008-160



25149-003-192



25149-16-007-160



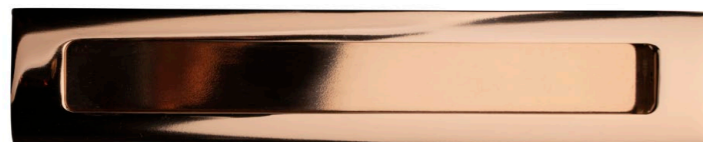
07149-013



07149-003

Style creates luxurious vibe to cabinet hardware...

PULL HANDLE FOR SOCKET DOOR



1008-008-18



08-007-18

VISTA D'ORO
BY SAHINOGLU

FACTORY: ŞAHİNOĞLU BRONZ PRES DÖK. TİC ve SAN A.Ş

Istanbul Tuzla Organized Industrial Zone 9. St.

No: 13 Tepeören - Tuzla - Istanbul / Turkey

T: +90 216 593 26 61 T: +90 216.593 26 64

WhatsApp: +90 533 208 54 71

email: info@vistadorodesign.com

email: export@sahinoglu.com.tr

www.vistadorodesign.com